

DESCRIPTION: —

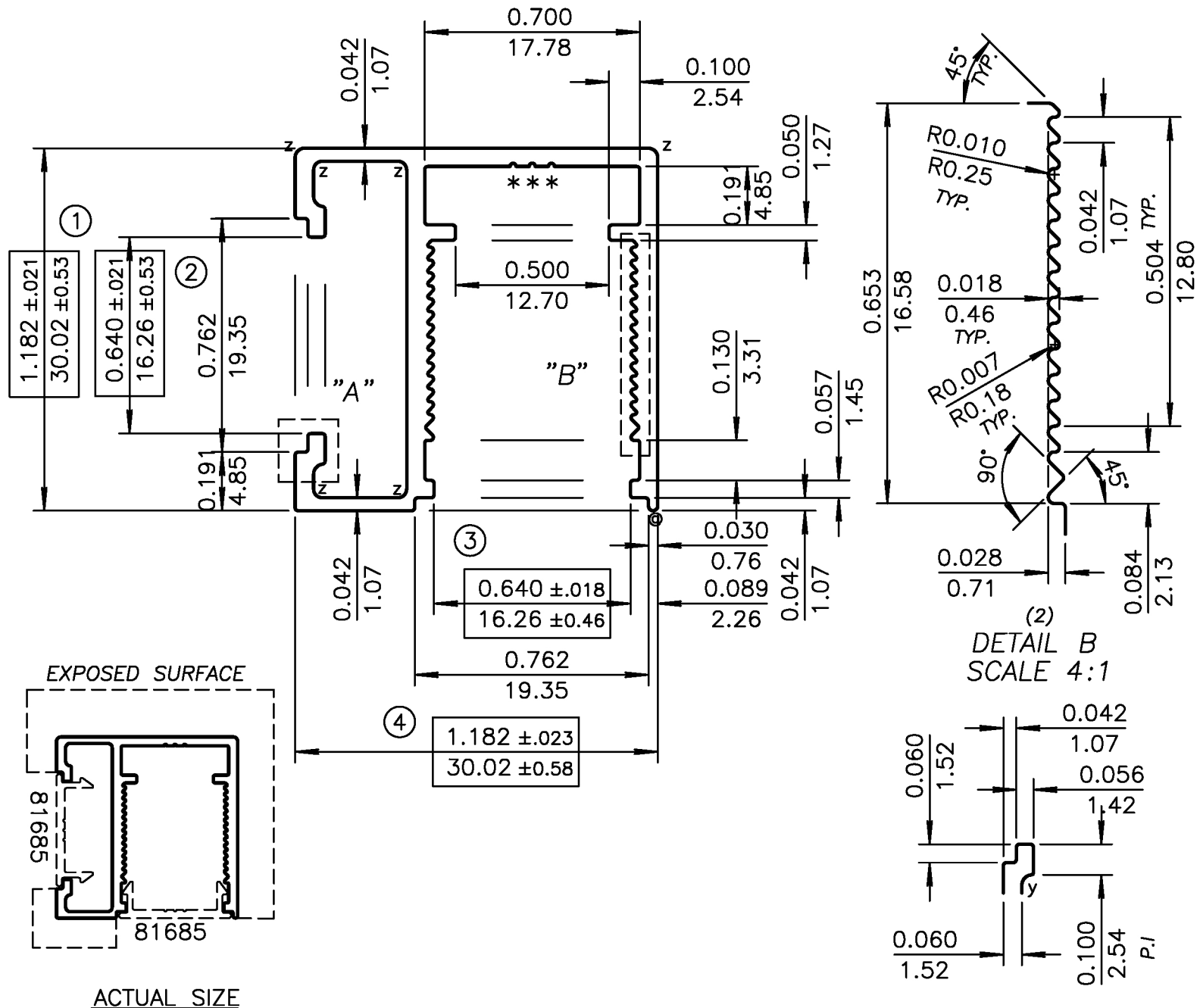
TARRIF# 7604.29.10.00

PROPOSAL# 41000-2

DATE

SYM

REVISION



DETAIL B  
SCALE 4:1

DETAIL A  
SCALE 2:1

CUSTOMER'S SUPPLIED CAD FILE  
 BREAK CORNERS = 0.010 (0.25) R.  
 (z) = 0.030 (0.76) R. (6)  
 (y) = 0.034 (0.86) R. (2)  
 (⊙) = FULL R. (1)

(\*) = 0.010(0.25) R. X 0.010(0.25)D. HYDRO I.D. MARKS

	UNSPECIFIED WALL THICKNESS
	⑤ 0.059(1.50) ±0.006(0.15)

EST. AREA 0.277 IN <sup>2</sup> 179 MM <sup>2</sup>	OUT PER. — IN — MM
EST. WT. 0.332 LBS/FT. 0.495 KG/M	FACTOR 29
EST. PER. 9.602 IN 244 MM	C.C.D. 1.655 IN 42 MM
DWN BY Sandra	ALLOY 6063-T5
SCALE 2:1	DATE 05,04,2024

SIGNED: \_\_\_\_\_  
 DATE: \_\_\_\_\_

BREAK ALL CORNERS .016"R (0.41 mm)R UNLESS OTHERWISE NOTED.

STANDARD ALUMINUM ASSOCIATION TOLERANCES TO APPLY UNLESS OTHERWISE SPECIFIED