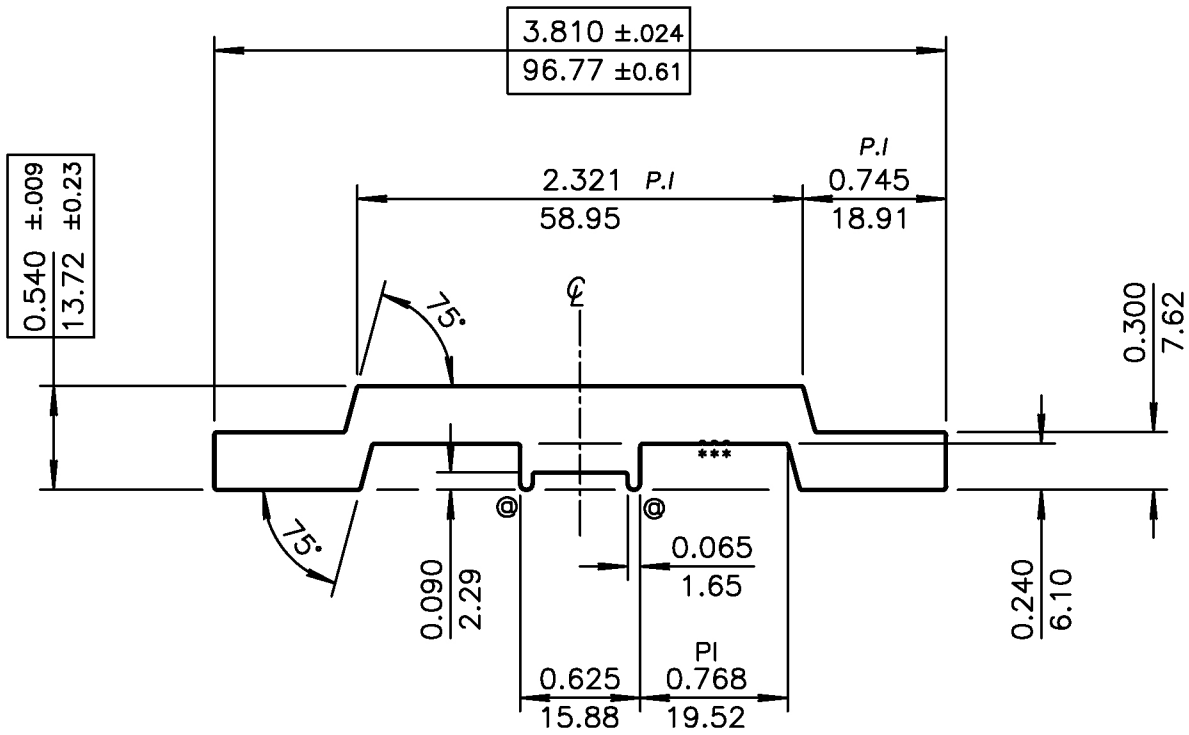


CUSTOMER	PART NO. —	DIE NO. AS 70474	DASH 1
DESCRIPTION: —	TARRIF# 7604.29.10.00	PROPOSAL# 31987-1B	
	DATE	SYM	REVISION



NO SURFACES EXPOSED.

CUSTOMER'S SUPPLIED CAD FILE

UNMARKED RADII = RADIUS TO SUIT  
 BREAK CORNERS = 0.016 (0.41) R.  
 (⊙) = FULL R. (2)

(\*) = 0.010(0.25) R. X 0.010(0.25)D. SAPA I.D. MARKS

	UNSPECIFIED WALL THICKNESS	
	0.300(7.62) ±0.008(0.20)	
EST. AREA 1.285 IN <sup>2</sup> 829 MM <sup>2</sup>	OUT PER. —	IN — MM
EST. WT. 1.542 LBS/FT. 2.295 KG/M	FACTOR 6	
EST. PER. 9.511 IN 242 MM	C.C.D. 3.819 IN 97 MM	
DWN BY <i>Vivian</i>	ALLOY 6063-T5	SCALE 1:1 DATE 14-06-06

BREAK ALL CORNERS .016"R (0.41 mm)R UNLESS OTHERWISE NOTED.

STANDARD ALUMINUM ASSOCIATION TOLERANCES TO APPLY UNLESS OTHERWISE SPECIFIED