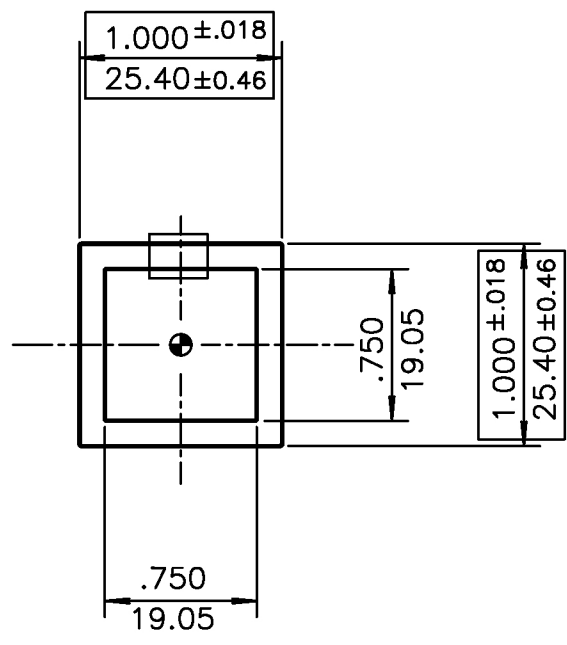


DESCRIPTION: 1.000 X .125 SQUARE TUBE	TARRIF# 7608.20.00.30	PROPOSAL#
---------------------------------------	-----------------------	-----------

DATE	SYM	REVISION	
98/08/20	A	SHAPE REDRAWN AND WT. RECALC.	SS
03/07/08	A	SECTION PROPERTIES ADDED	GS

MUST USE
WATER QUENCH



$I_{xx} = 0.057$ in ⁴
$I_{yy} = 0.057$ in ⁴
$S_x = 0.114$ in ³
$S_y = 0.114$ in ³
$R_x = 0.361$ in
$R_y = 0.361$ in
● = C OF G



□ = PULL TEST SAMPLE

	UNSPECIFIED WALL THICKNESS	
	0.125	
EST. AREA 0.438 in ² 282 mm ²	OUT PER. 3.983 in 101 mm	
EST. WT. 0.515 LBS/FT. 0.766 KG/M	FACTOR 14	
EST. PER. 6.966 in 177 mm	C.C.D. 1.400 in 36 mm	
DWN BY AP	ALLOY 6063	SCALE 1:1 DATE 69/12/10
BREAK ALL CORNERS .016"R (0.41 mm)R UNLESS OTHERWISE NOTED.		STANDARD ALUMINUM ASSOCIATION TOLERANCES TO APPLY UNLESS OTHERWISE SPECIFIED