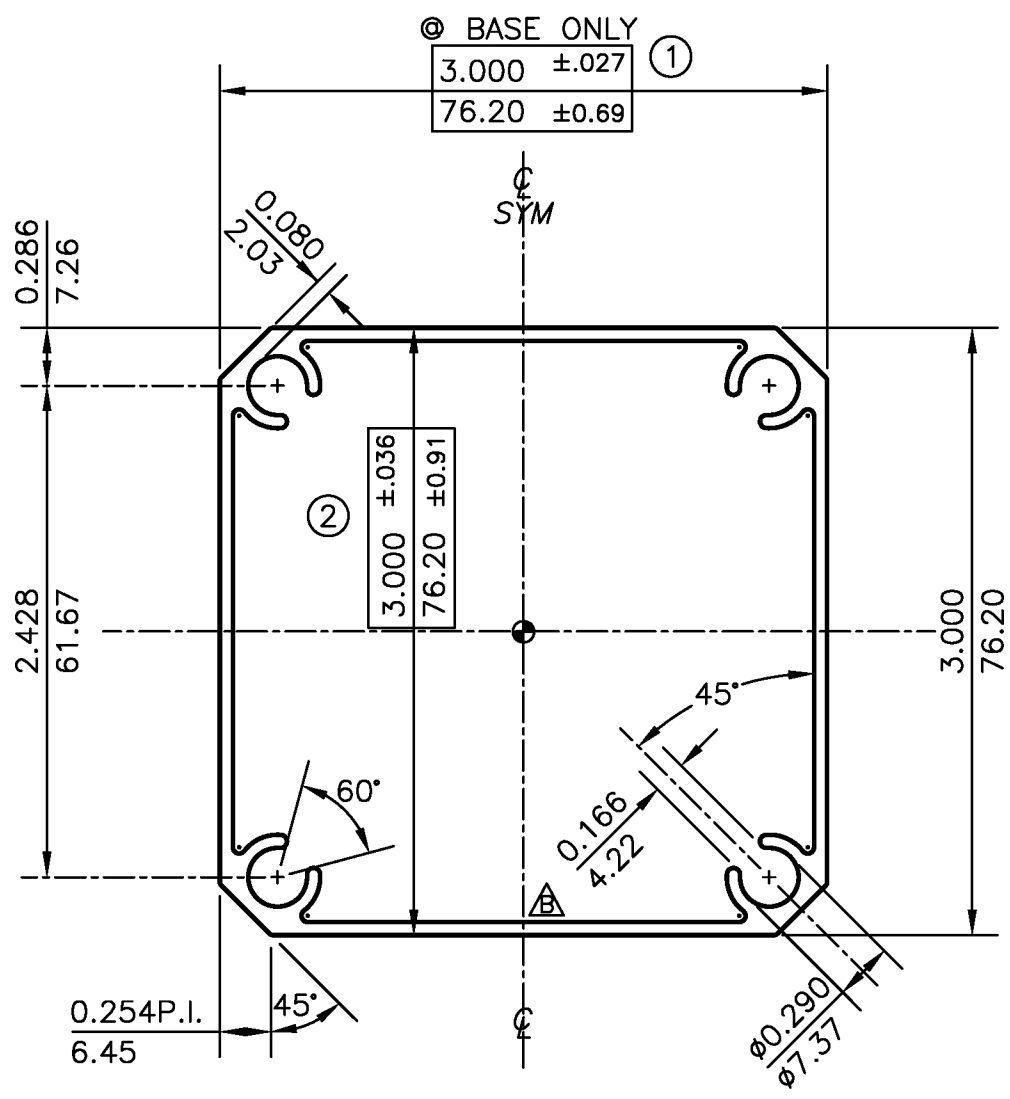


DESCRIPTION: 3" x 3" POST TARRIF# 7604.21.00.00 PROPOSAL# 16251-4

DATE	SYM	REVISION	BY
18,11,2020	A	REMOVED GROOVES	K.Y
22FEB2024	B	HYDRO I.D. MARKS (RAISED) REMOVED	V.P.

EXPOSED SURFACE ALL AROUND

(*) = 0.010(0.25) R. X 0.010(0.25)H.



REFERENCE ONLY

Area: 0.952
 Perimeter: 25.883
 Bounding box: X: -1.500 -- 1.500
 Y: -1.499 -- 1.501
 Moments of inertia: X: 1.354 Y: 1.353
 Product of inertia: XY: 0.000
 Radii of gyration: X: 1.192 Y: 1.192
 Principal moments and X-Y directions about centroid:
 I: 1.353 along [0.162 0.987]
 J: 1.354 along [-0.987 0.162]

PAINTED MATERIAL

UNMARKED RADII = RADIUS TO SUIT
 BREAK CORNERS = 0.016 (0.41) R.
 (·) = 0.031(0.79) R. (8)

ARCHITECTURAL FENCE & RAILINGS		UNSPECIFIED WALL THICKNESS	
		③ 0.065(1.65) ±0.010(0.25) H	
EST. AREA	0.952 IN ² 614 MM ²	OUT PER.	11.400 IN 290 MM
EST. WT.	1.142 LBS/FT. 1.700 KG/M	FACTOR	23
EST. PER.	25.837 IN 656 MM	C.C.D.	3.899 IN 99 MM
DWN BY	J.S. ALLOY 6063-T5	SCALE	1:1 DATE 10/03/26